

tradetested

DRAIN CLEANER SPIN TOOL

Product code: 949687

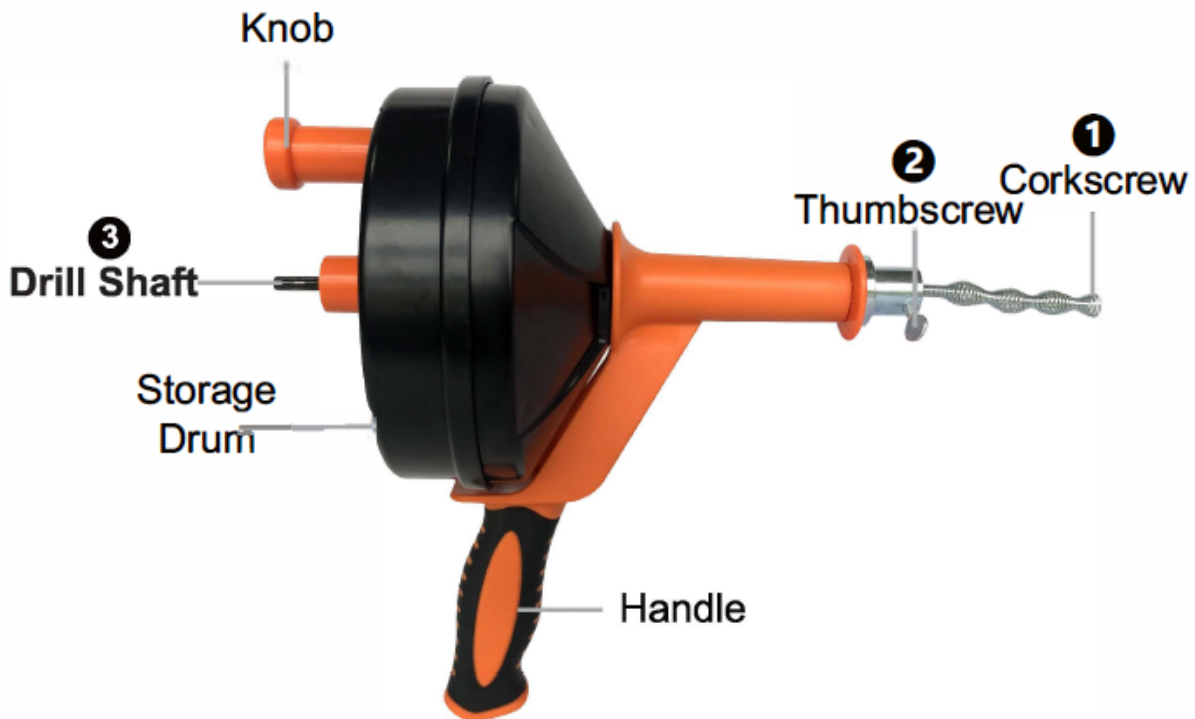
User Manual



Product Features:

The Drain Cleaner Spin Tool is used for clearing small household drains and usually, the most common stoppages. This tool can clear local kitchen, washing machine, bathroom sink, tub & shower blockages.

Structure:



1. The corkscrew end can be cut to be a sharper point if you are DIY savvy.
2. The thumbscrew is for locking the cable when turning the crank clockwise to feed the snake into the drainpipe.
3. The drill shaft works with your drill to provide extra power for stubborn blockages.

Product Details:

Product Color	Orange
Product Weight	3.0 LB / 1.4 kg
Snake Diameter	1/4 Inch / 6mm
Snake Length	25 Feet / 7m
Snake Material	72A Mn-Steel
Corkscrew Dia.	2/5 Inch / 10mm

A dimensional diagram of the Drain Cleaner Spin Tool. The diagram shows the tool from a side perspective with various measurements indicated by dimension lines. The measurements are: 5.12" (total height), 4.13" (height of the drum), 3.74" (width of the drum), 1.57" (height of the handle), and 6.3" (width of the handle).



Before Operating The Tool:

Please note:

1. The drain cleaner spin tool is suitable for pipes from 0.5 inches up to 2.5 inches.
2. The tool is not suitable for soft/thin plastic pipes.
3. Not suitable for urine scale and hard clogs
4. Clog like bottle caps and rocks will require plumber service.
5. This drain cleaner spin tool is not specially designed to unclog a toilet blockage. Do not use it on the toilet, it may scratch the porcelain of the bowl.

Notices & Safety:

1. The cable is not anchored to the auger drum. Pull the cable out slowly and do not let it out all of the ways in case it falls into the problem pipe or drain. If the cable does come out completely, simply re-feed the cable back into the drum.
2. Some sinks may require the hole cover to be removed. If the drain strainer stopper can not be detached, you may need to undo the sink trap.
3. To prevent injury, do not let the corkscrew tip face people's body when loosening the thumbscrew.
4. If the steps specified in these instructions have been followed and the blockage has not been cleared, please contact a plumber to prevent damage.

Unblocking the sink:

Scenario A

1. Put on your protective equipment such as gloves & goggles.
2. Remove the drain cover/stopper. If it cannot be removed easily, please skip this scenario and refer to **Scenario B**



3. Loosen the thumbscrew and slowly push the cable into the drain, shove as much in as you can before it stops. Once it stops, take up slack by pushing the excess back into the drum. Leave about 5-6 inches of space between the tool & drain.

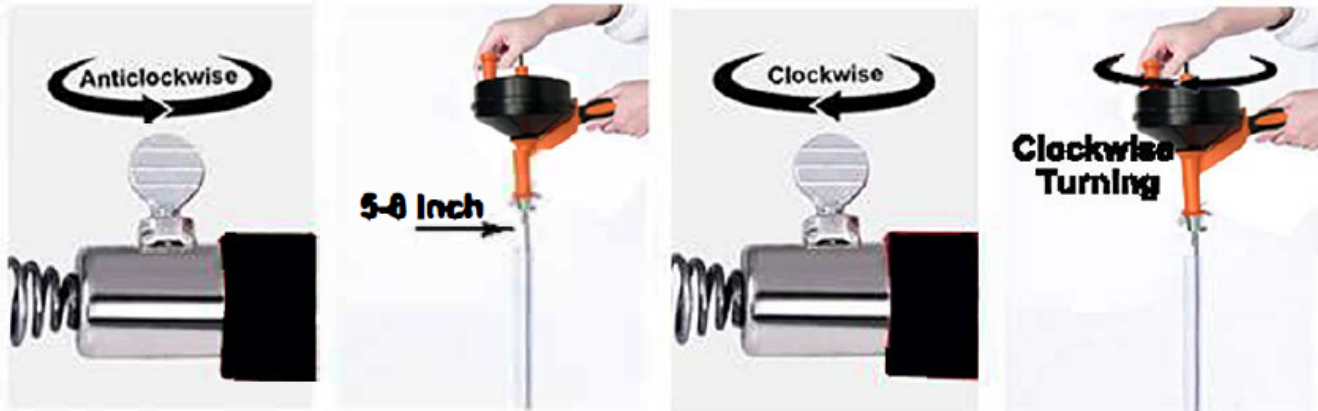


4. Tighten the thumbscrew and turn the drum clockwise using the knob. This will force the snake to go further into your pipe causing a cleaning action.



Note: You might meet resistance when pushing the cable through the P-trap, the U-shaped section of pipe under the sink, or at any other bend in the pipe. If so, tighten the thumbscrew and crank the auger slowly while pushing on the cable. A couple of turns should help the auger end get through the bends in the drain.

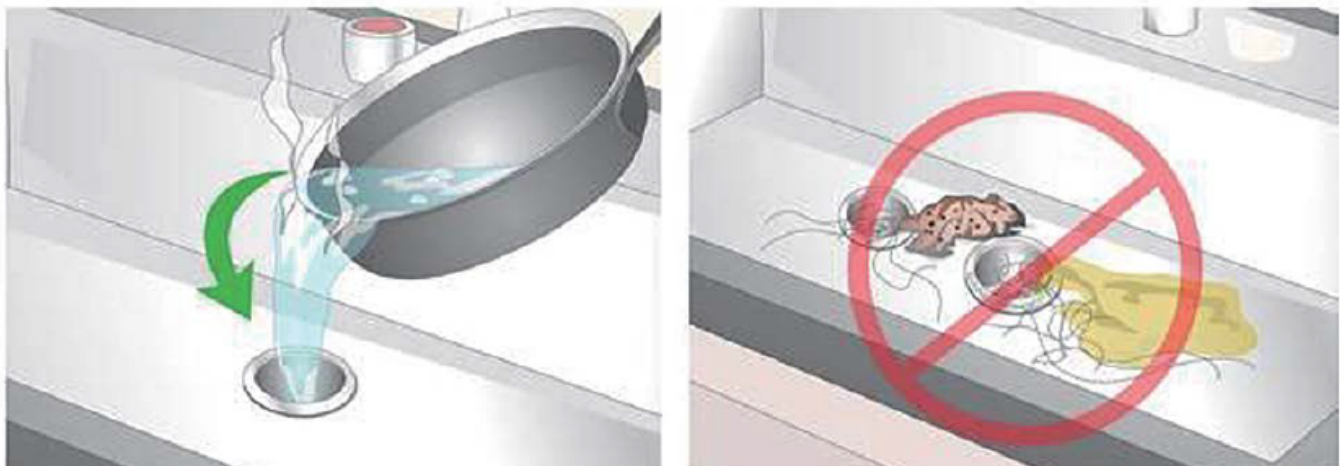
5. Repeat step 3-4 until you feel you've worked through the clog. This should work if the clog is in the trap.



6. Pull the cable out of the pipe, feeding it back into the auger drum as you go. The cable may have a large hair clog stuck to its end when it comes out of the drain. It is recommended to wipe the snake with a clean cloth as you slide it into the drum.



7. Repeat the process as needed until the clog is cleared.
8. Run hot water from the sink faucet to flush the drain and make sure the water is flowing. If the drain still runs slowly, repeat the clearing process.



Scenario B

Hint: Place a bucket under the trap to catch the water that will come out once the trap is removed.

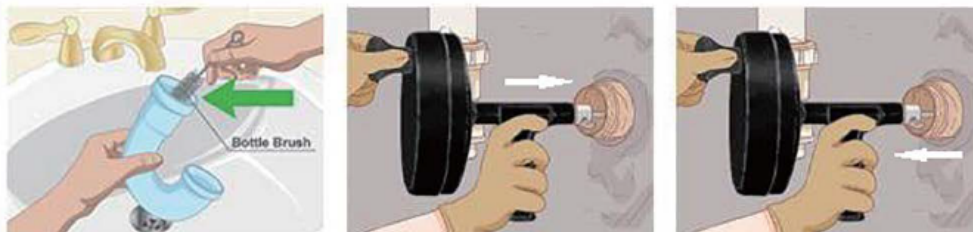
1. If there is a drain strainer stopper that could not be detachable as illustrated, remove the pipe trap below the sink.



2. Loosen the slip nuts at each end of the trap with tongue-and-groove pliers or a pipe wrench. Remove the slip nuts and the trap. Note how the nylon slip washers are oriented on the pipe to make reassembly easier.



3. Clean out the trap and insert the auger cable into the horizontal section of the drainpipe, shove as much in as you can before it stops. Once it stops, take up the slack by shoving the excess back into the drum. Leave about 5-6 inches of space between the tool & drain.



Unblocking the sink: Toe Touch

Note: Different types of drain stoppers require specific tools to finish the removal step.

1. Remove the drain stopper and strainer.



2. Insert the cable into the drain pipe in the same manner as the previous instructions; loosen the thumbscrew, extend more cable as required, tighten the thumbscrew, turn the drum clockwise. Repeat the process until you feel you've worked through the clog. This will determine if the blockage is in the trap



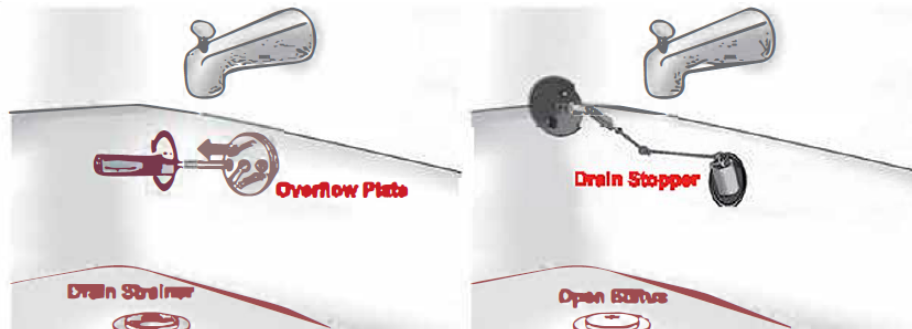
3. Pull the cable out of the pipe, feeding it back into the auger drum as you go. The cable may have a large hair clog stick to its end when it comes out of the drain. It's recommended to wipe off the snake.



4. Repeat the process as needed until the clog is cleared

Unblocking the sink: Trip Lever

1. Set your tub to the **open** position and remove any screws you see on the drains faceplate.



2. Insert the cable into the overflow and snake the drain pipe.



3. If the drain still runs slowly, remove the strainer/stopper and insert the cable into the drain hole and snake the drain pipe.

Note: The cable sometimes may go up the drain and come out from the overflow hole, just pull it back and see if the drain runs faster

4. If the drain still runs slowly, repeat step 2-3 as needed until the blockage is clear.

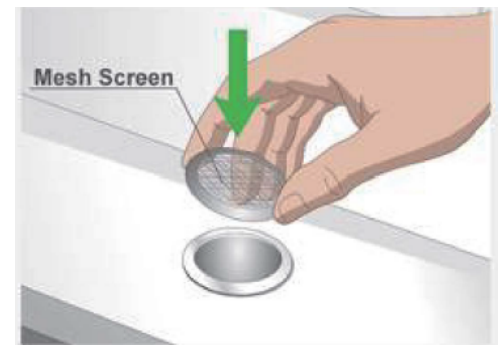
Maintenance

1. Rinse the entire used portion of the snake (run the water while you retract the snake)
2. Wipe off the water and leave the snake to air dry.
3. Apply a coat of oil (cooking or engine is fine) before feeding it back into the drum.

Avoiding future blocks:

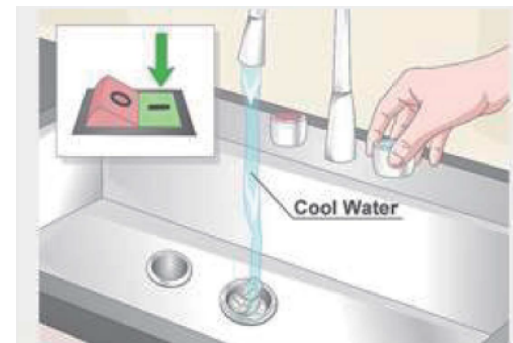
1. SINK STRAINER

A blocked kitchen sink is usually the result of waste or foreign objects entering the drain. Use a sink strainer to prevent small items from entering the drainpipe.



2. TAKE CARE OF GARBAGE DISPOSER

When using a garbage disposer, run cold water at full volume while machine is chopping the waste; leave the water running for a full minute after you shut off the disposer. This precaution flushes the garbage completely out of the small-diameter sink drainpipe, where it's less likely to cause a clog.



3. MATERIAL DUMP DOWN DRAIN

Do-it-yourselfers often flush building materials down the drain. The most common offender is plaster or wallboard compound, which seems innocent enough going down but can harden in the drainpipes and clog them. To prevent these blockages, never dispose of leftover building materials in sink drains.

